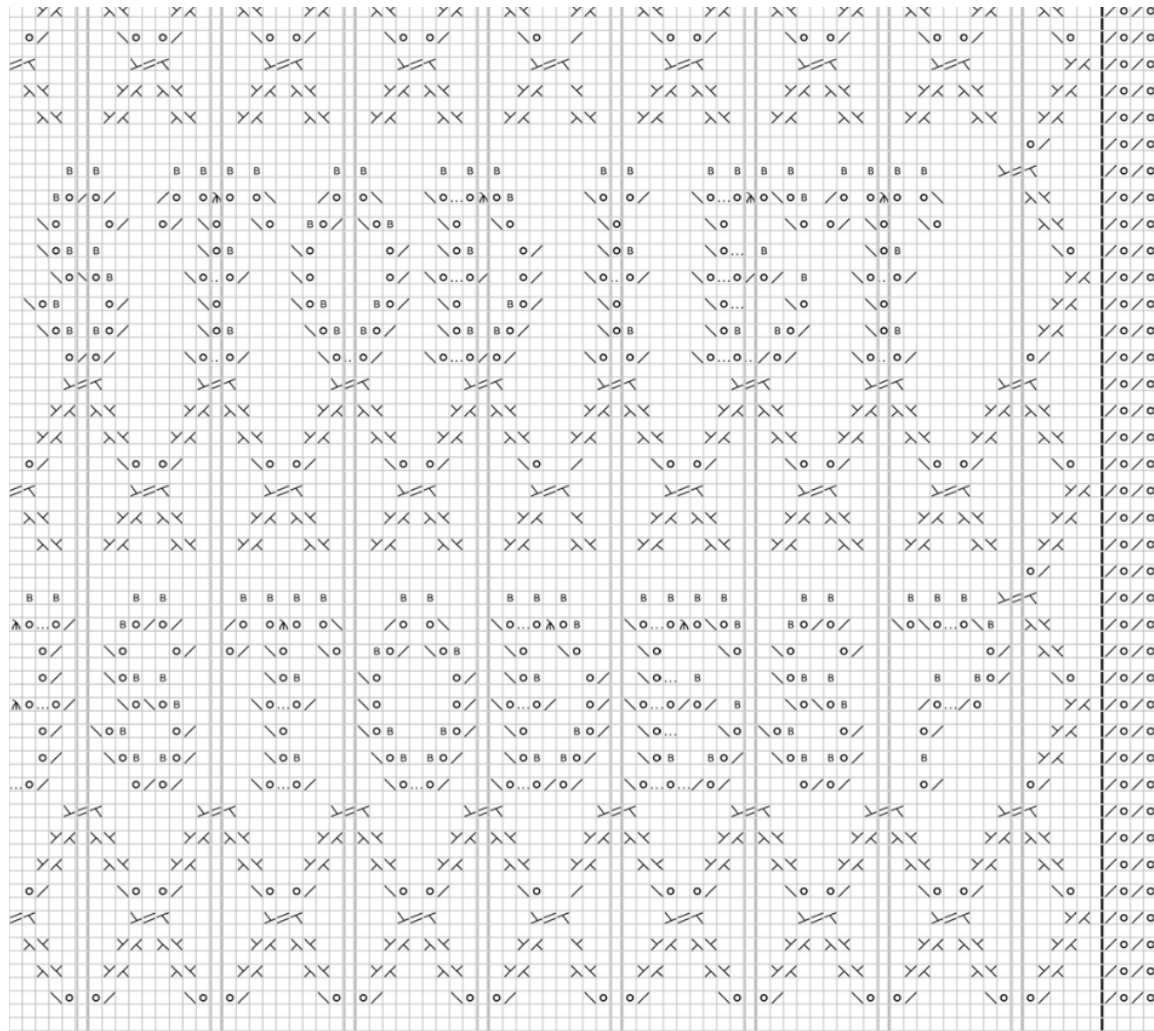


Defarge Charts—this chart covers **sections 1-8** (and part of 9) of the **center panel (B)** of the Defarge Stole. The “sections” correspond to the vertical lines that separate the letters on the bottom row. I found it easiest to draw new lines on my chart to sectionalize the upper row of letters and readjust the section numbers.

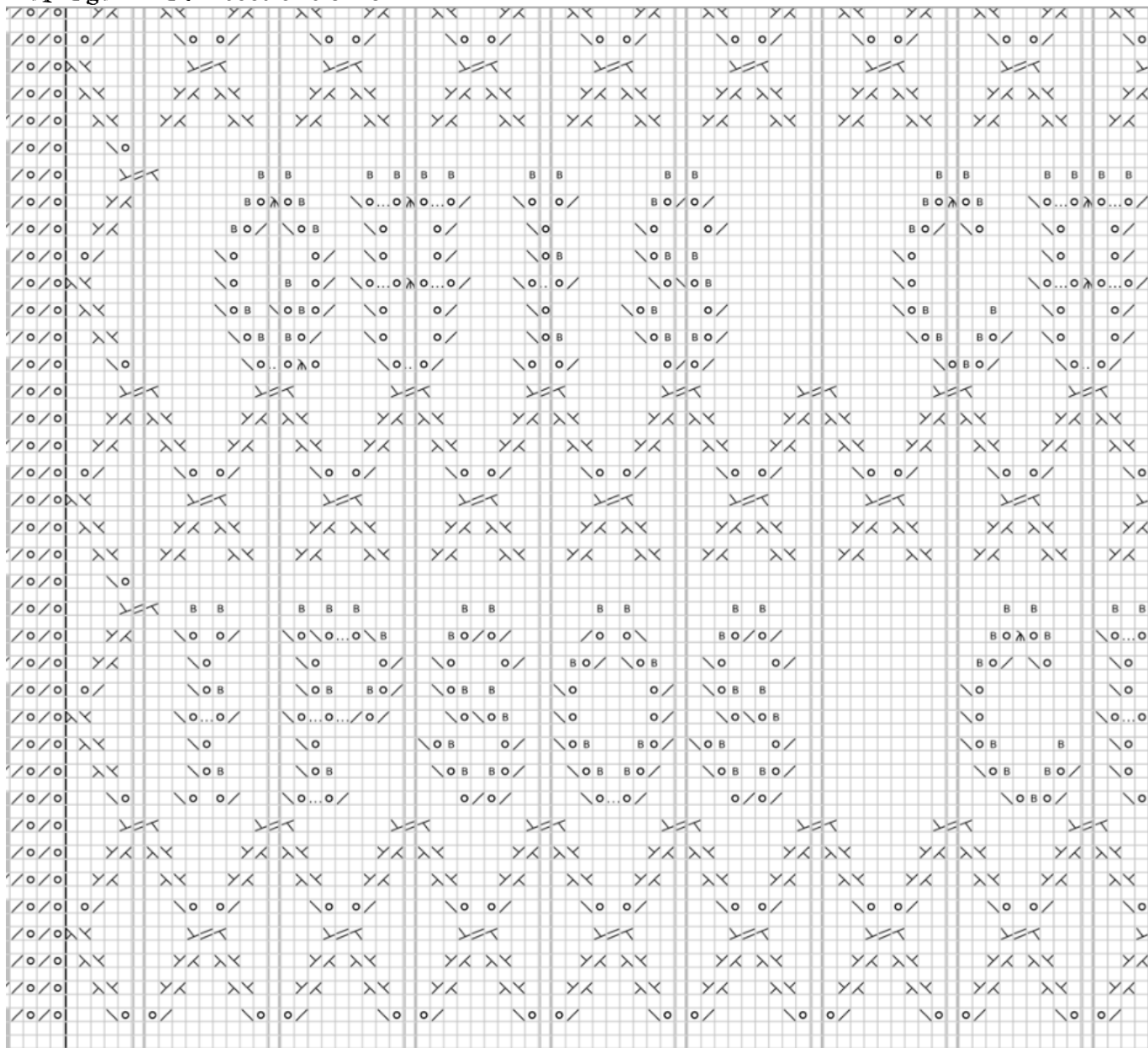
Full B chart
follows.



Sections	9	8	7	6	5	4	3	2	1
----------	---	---	---	---	---	---	---	---	---

1—CHART B sections 1-8 (incl pt of 9)

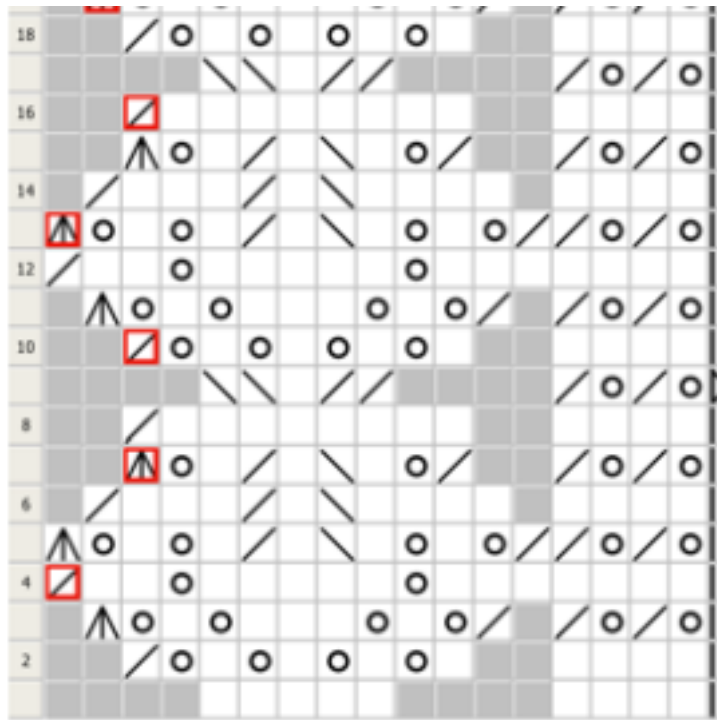
Defarge chart—sections 9-16



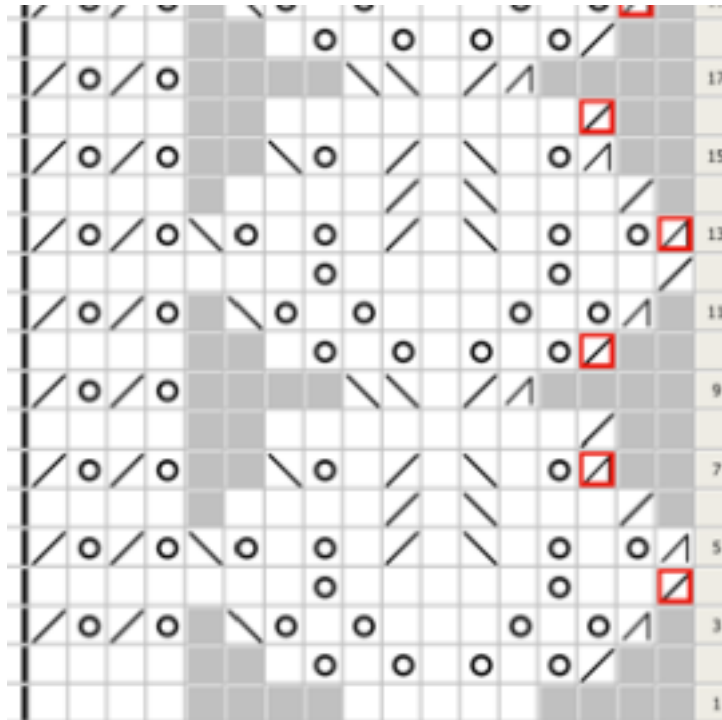
16	15	14	13	12	11	10	9	Sections
----	----	----	----	----	----	----	---	----------

2-CHART B sections 9-16

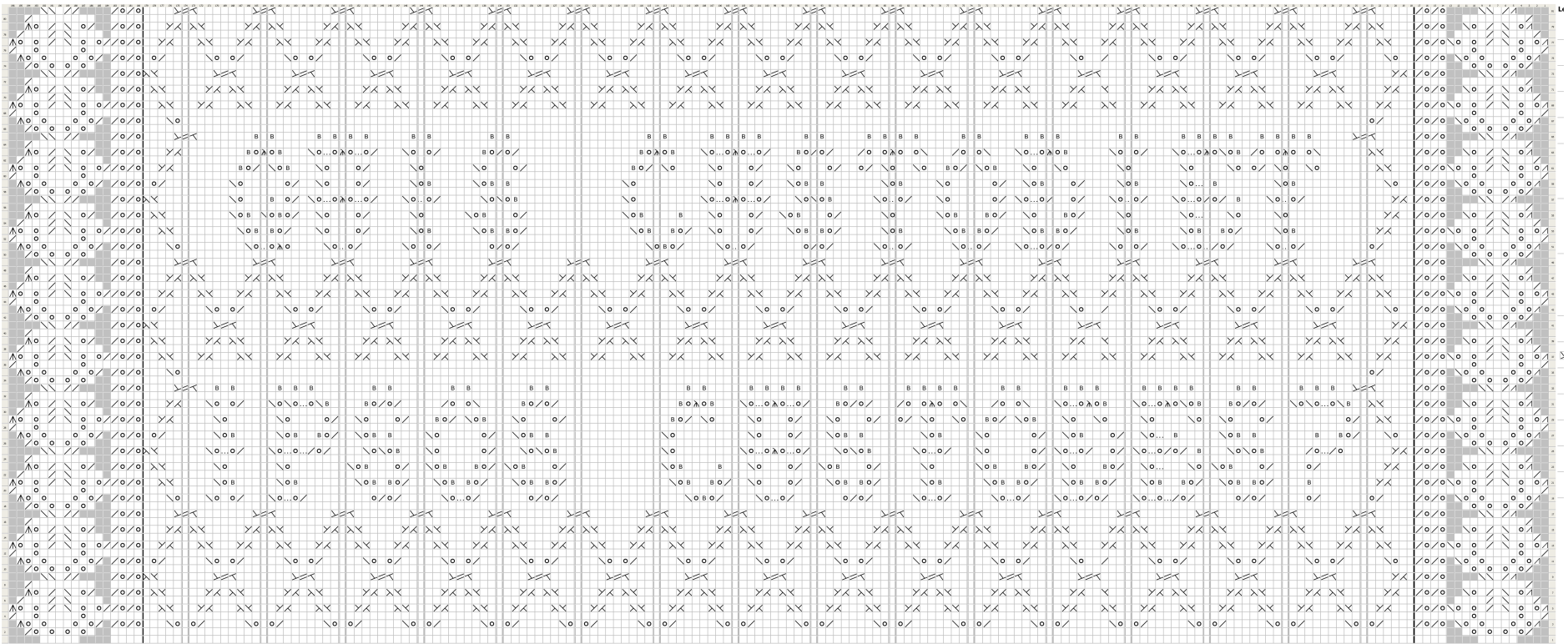
Wineglass motif with color detail for seaming stitches



Wineglass left



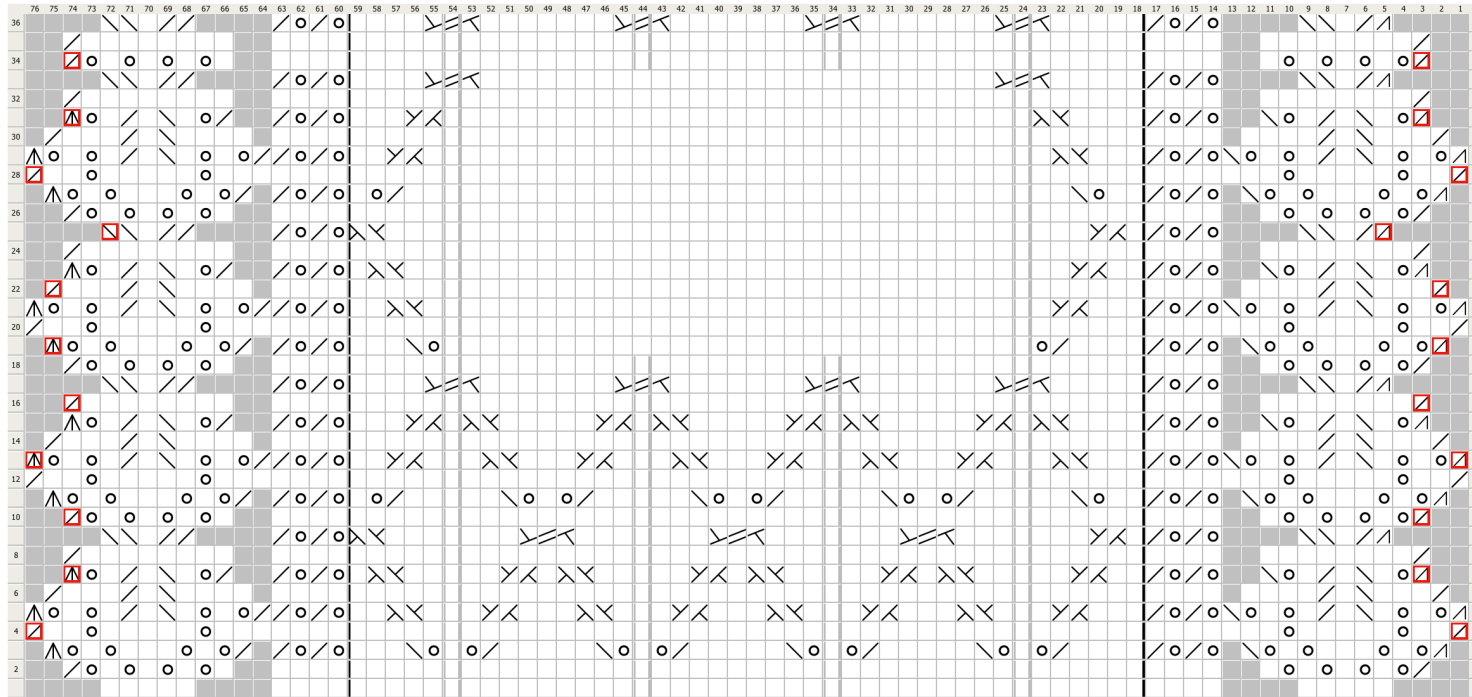
Wineglass right



Created in KiteVisuizer (www.kitefoundry.com)

4—Overview of Entire Chart B

Trellis and Wineglass motifs—this chart can be expanded for creating your own words and motifs



Created in KnitVisualizer (www.knitfoundry.com)

- Legend:**
(www.knitfoundry.com)
- knit**
 RS: knit stitch
 WS: purl stitch
 - k2tog**
 RS: knit two stitches together as one stitch
 WS: Purl 2 stitches together
 - yo**
 RS: Yarn Over
 WS: Yarn Over
 - knit**
 RS: knit stitch
 WS: purl stitch
 - double twist**
 RS: twist next stitch on needle then RTBL
 WS:
 - ssk**
 RS: Slip one stitch as if to knit, Slip another stitch as if to knit. Insert left-hand needle into front of these 2 stitches and knit them together
 WS: Purl two stitches together in back loops, inserting needle from the left, behind and into the backs of the 2nd & 1st stitches in that order
 - s11 k2tog passo**
 RS: slip 1, k2tog, pass slip stitch over k2tog
 WS: none defined
 - knit tbl**
 RS: Knit stitch through back loop
 WS: Purl stitch through back loop
 - knit**
 RS: knit stitch
 WS: purl stitch